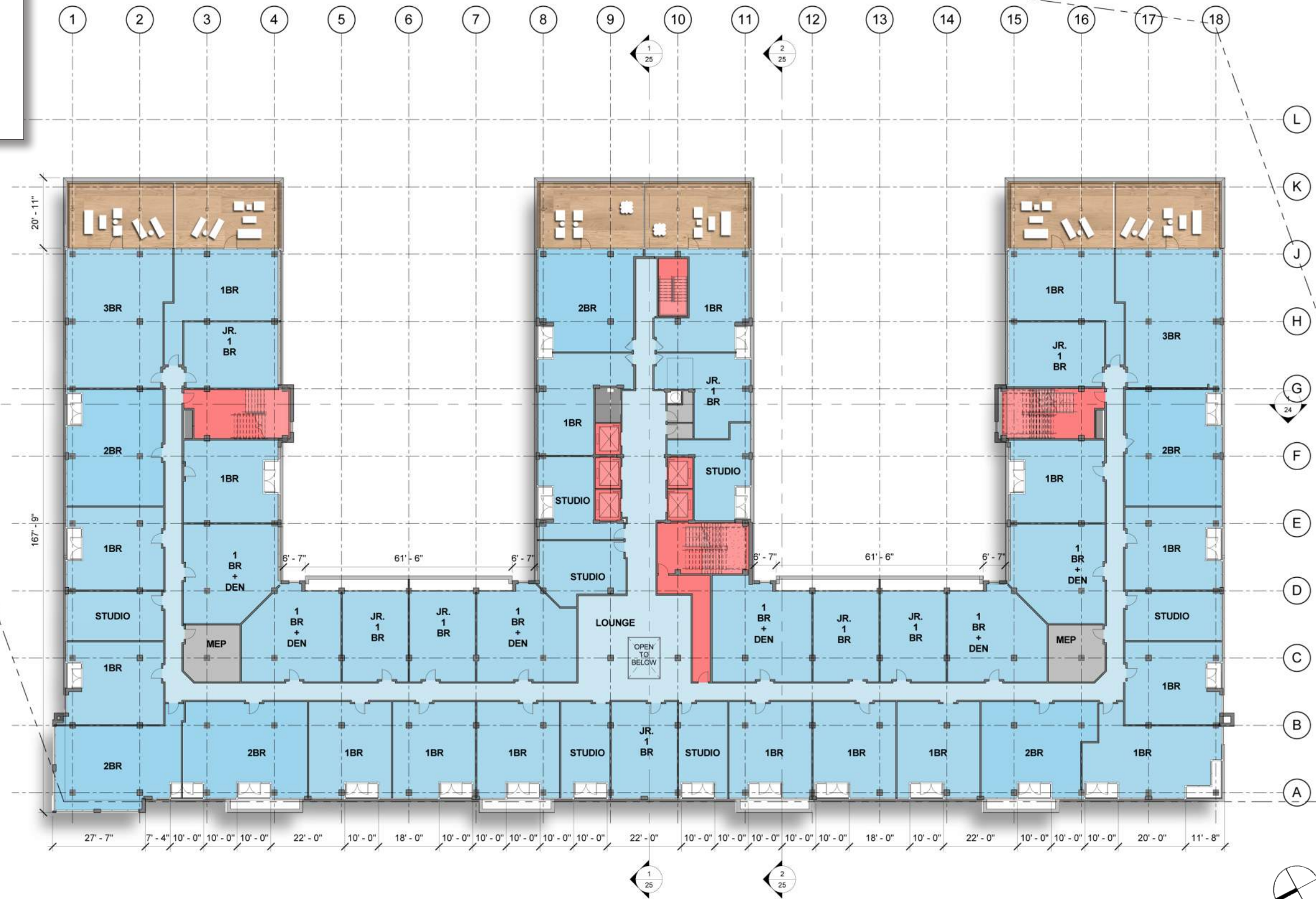


- RESIDENTIAL: UNITS
- RESIDENTIAL: COMMON
- CIRCULATION
- SERVICE



1900 HALF STREET

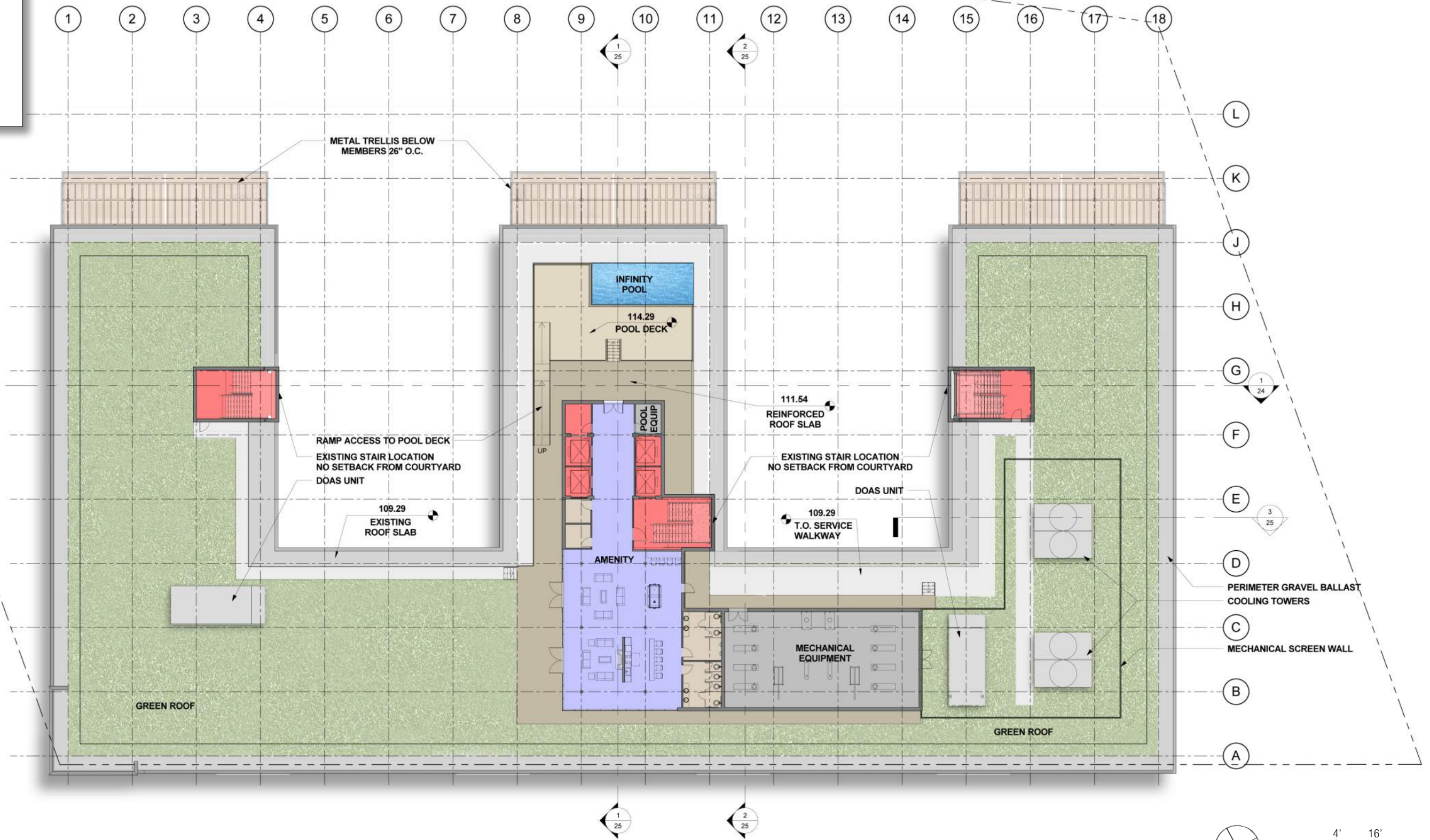
DC Zoning Commission Review

Square 666 Lot 15 / 1900 Half Street SW, Washington, DC · Douglas Development Corporation · Antunovich Associates © · Dewberry Consultants LLC · Lee and Associates Inc.

Floor 9 Plan

DC ZONING COMMISSION
 District of Columbia
 March 15, 2016
 CASE NO. 16-01
 EXHIBIT NO. 8A2

- AMENITY
- CIRCULATION
- RESTROOMS
- SERVICE



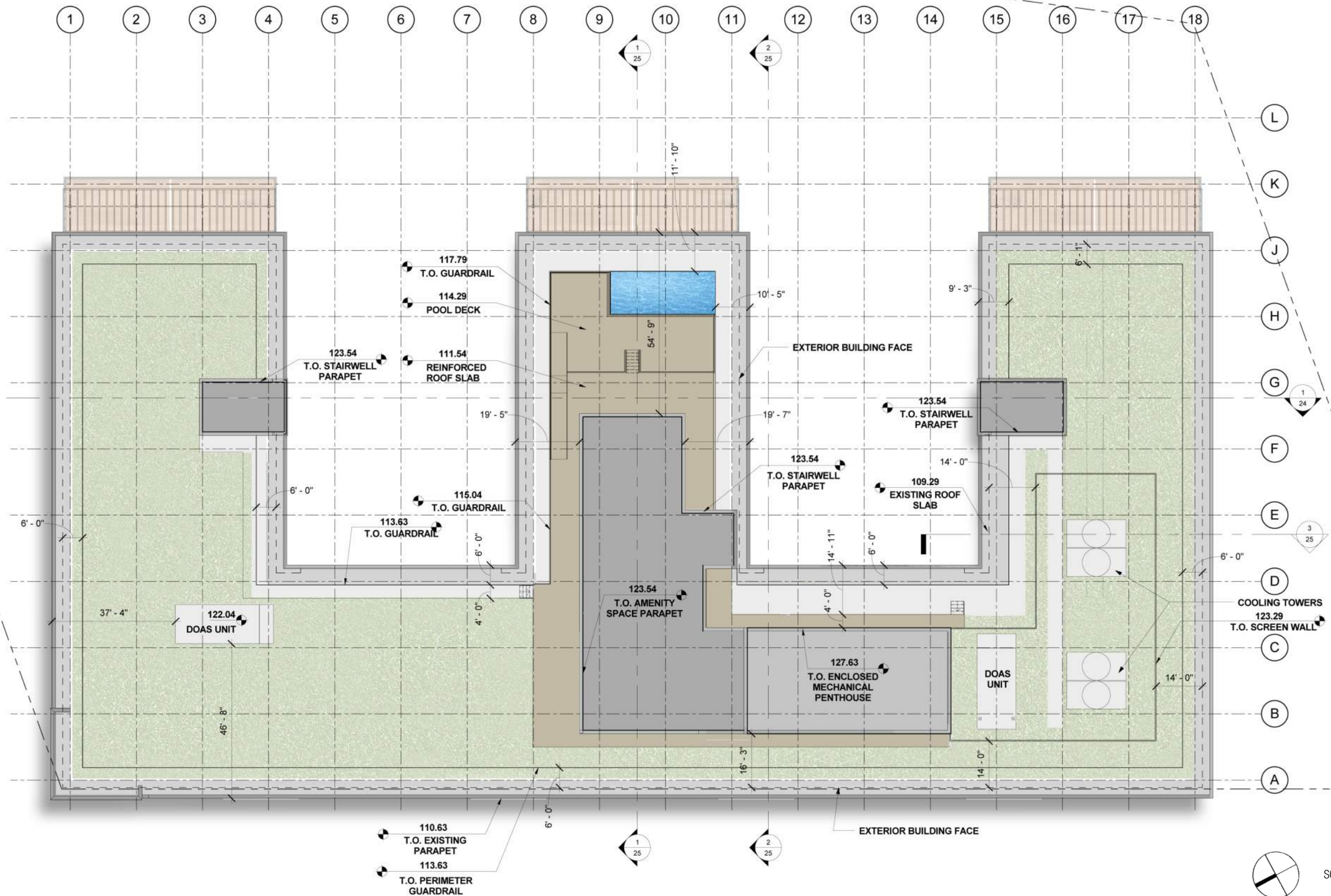
1900 HALF STREET

DC Zoning Commission Review

Square 666 Lot 15 / 1900 Half Street SW, Washington, DC · Douglas Development Corporation · Antunovich Associates © · Dewberry Consultants LLC · Lee and Associates Inc.

Penthouse Plan

March 15, 2016



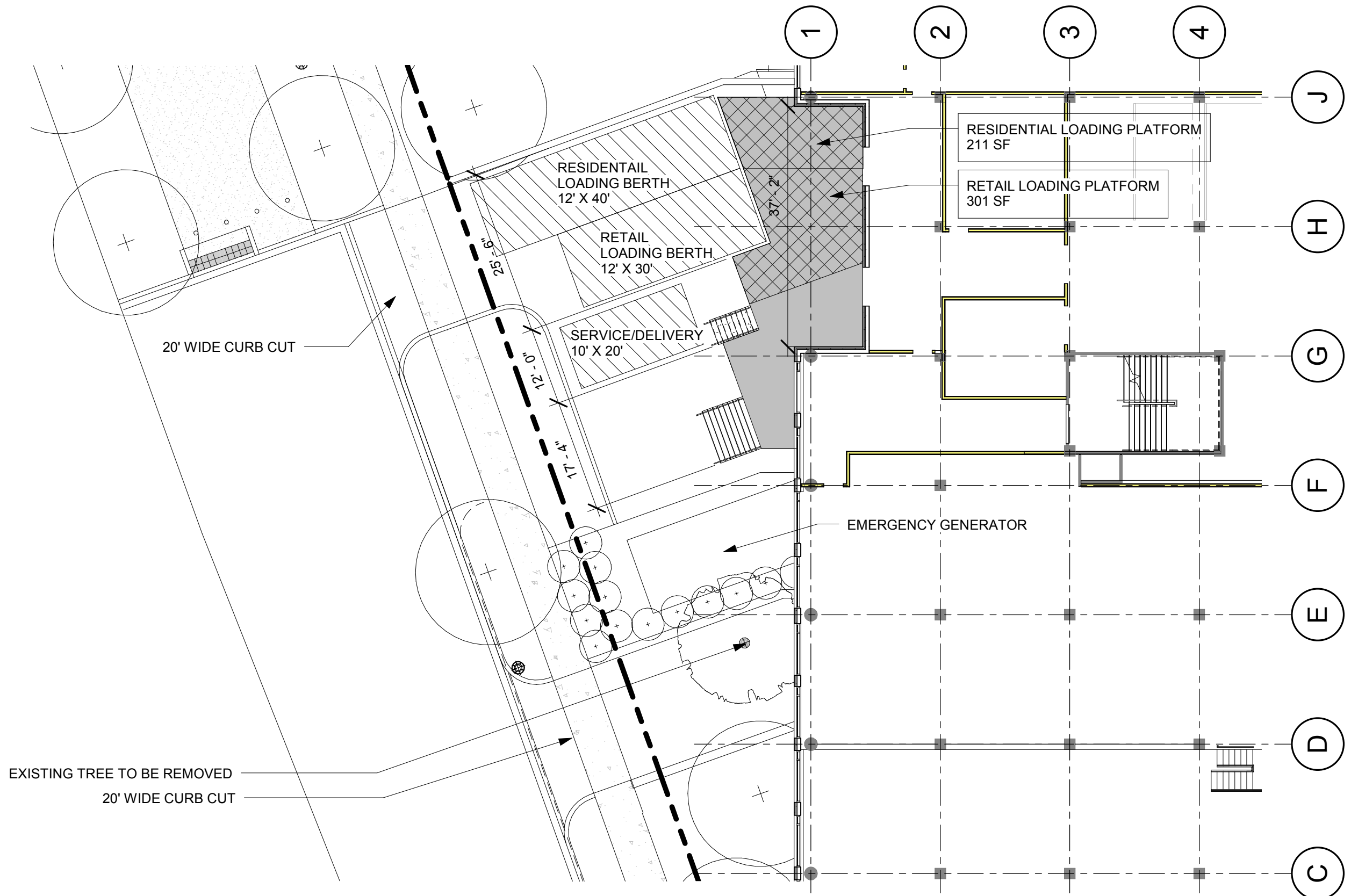
1900 HALF STREET

DC Zoning Commission Review

Square 666 Lot 15 / 1900 Half Street SW, Washington, DC · Douglas Development Corporation · Antunovich Associates © · Dewberry Consultants LLC · Lee and Associates Inc.

Roof Plan

March 15, 2016



1900 HALF STREET

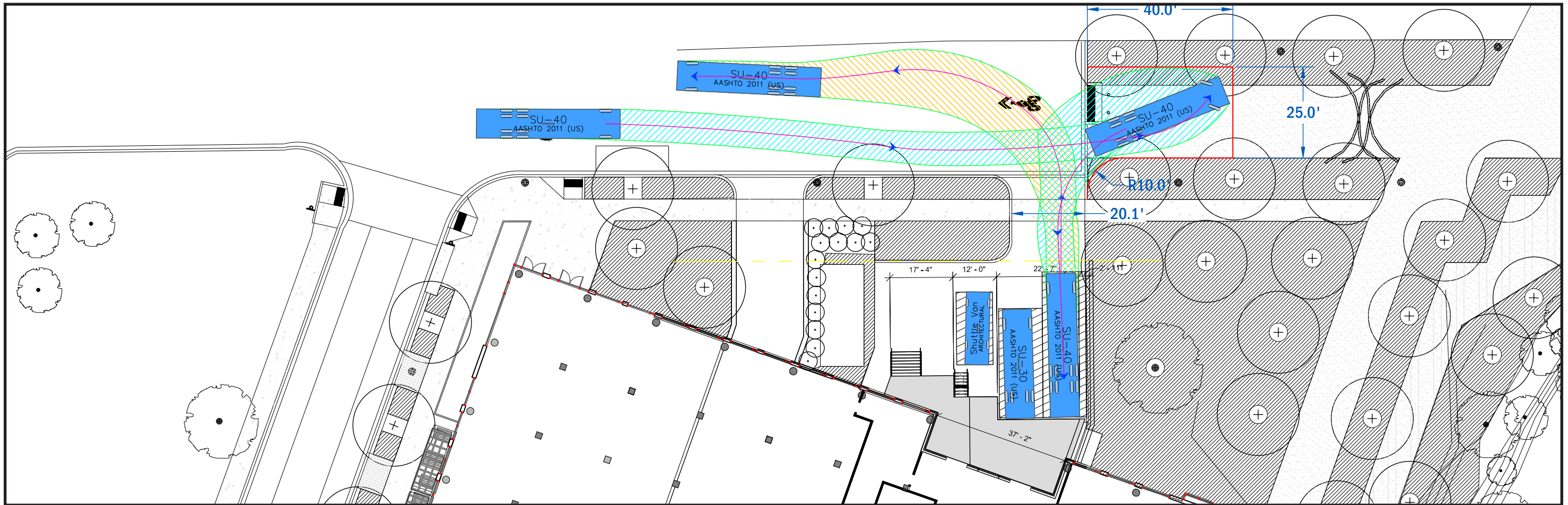
DC Zoning Commission Review

Square 666 Lot 15 / 1900 Half Street SW, Washington, DC · Douglas Development Corporation · Antunovich Associates © · Dewberry Consultants LLC · Lee and Associates Inc.

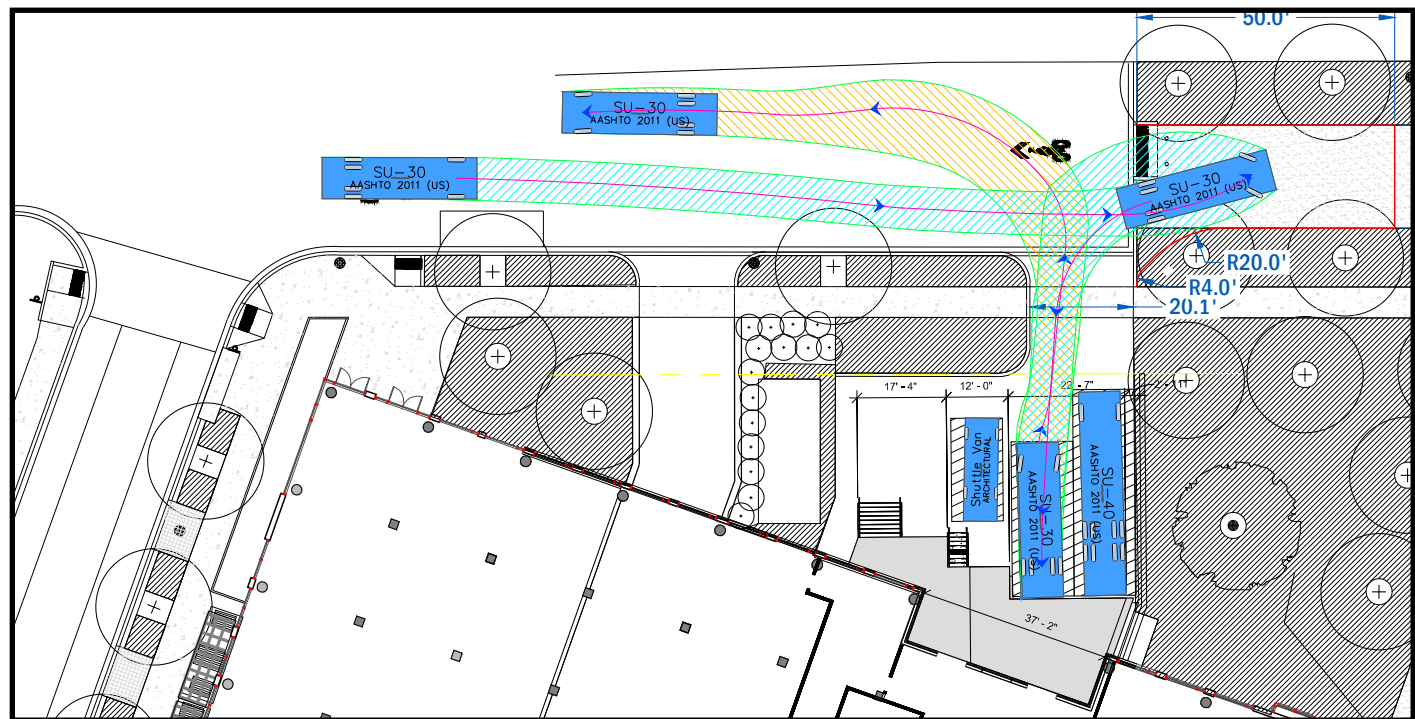
Enlarged Loading Plan

March 15, 2016

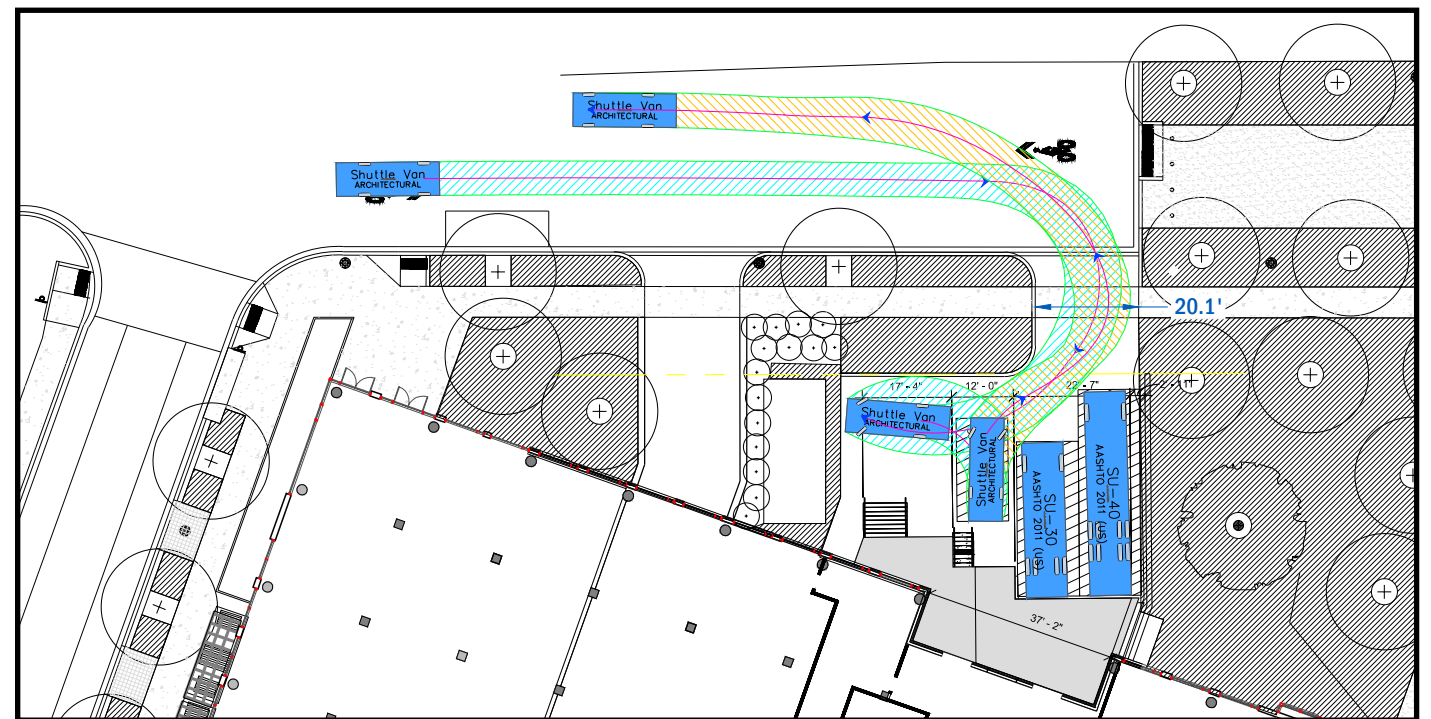
SCALE: 1/16"=1'-0"
0' 8' 16'



40' TRUCK



30' TRUCK



SERVICE VEHICLE

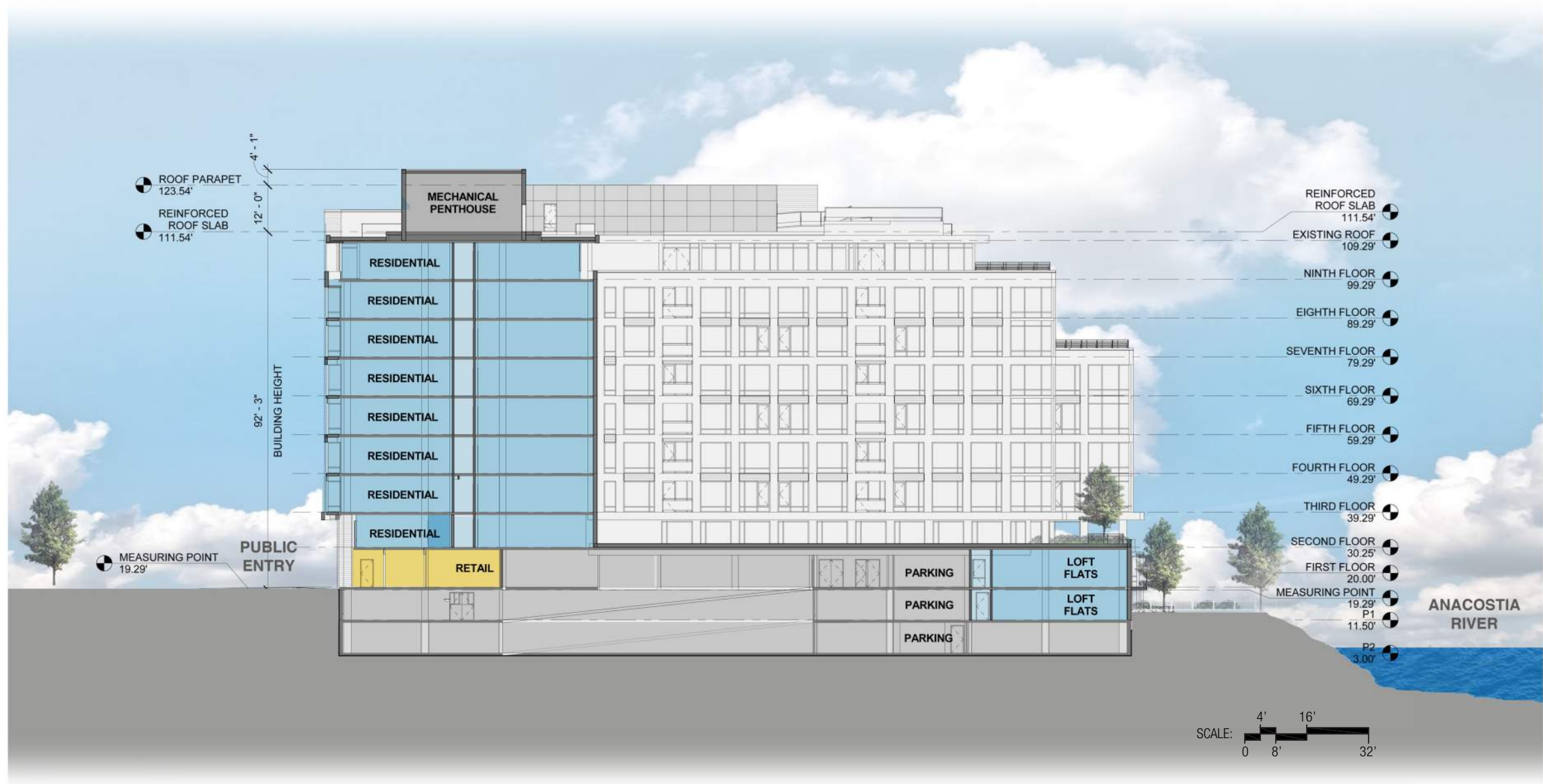
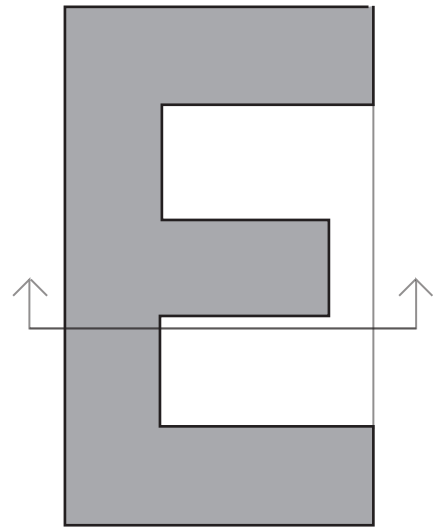
1900 HALF STREET

DC Zoning Commission Review

Square 666 Lot 15 / 1900 Half Street SW, Washington, DC · Douglas Development Corporation · Antunovich Associates © · Dewberry Consultants LLC · Lee and Associates Inc.

Loading Dock Access

March 15, 2016



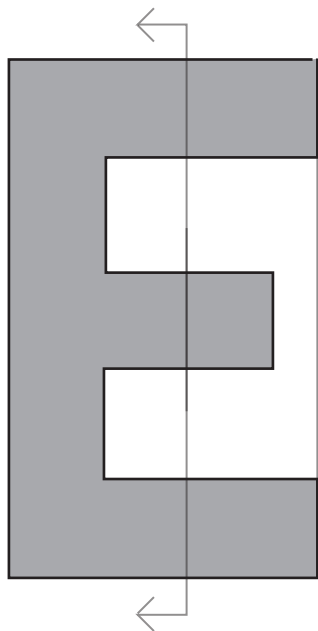
1900 HALF STREET

DC Zoning Commission Review

Square 666 Lot 15 / 1900 Half Street SW, Washington, DC · Douglas Development Corporation · Antunovich Associates © · Dewberry Consultants LLC · Lee and Associates Inc.

Building Section

March 15, 2016



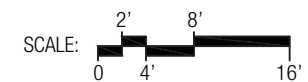
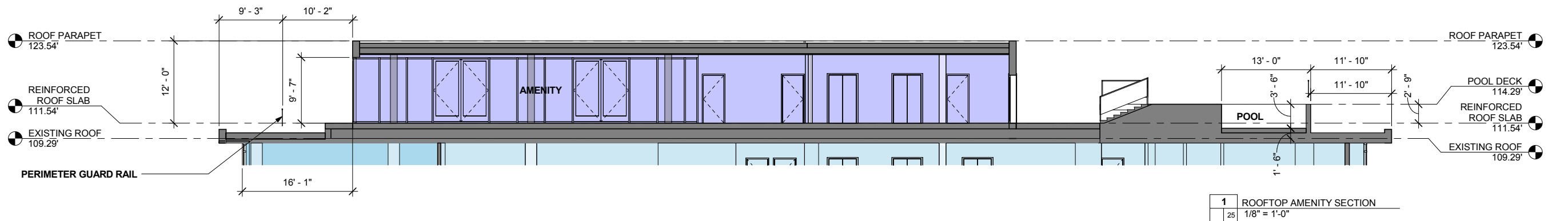
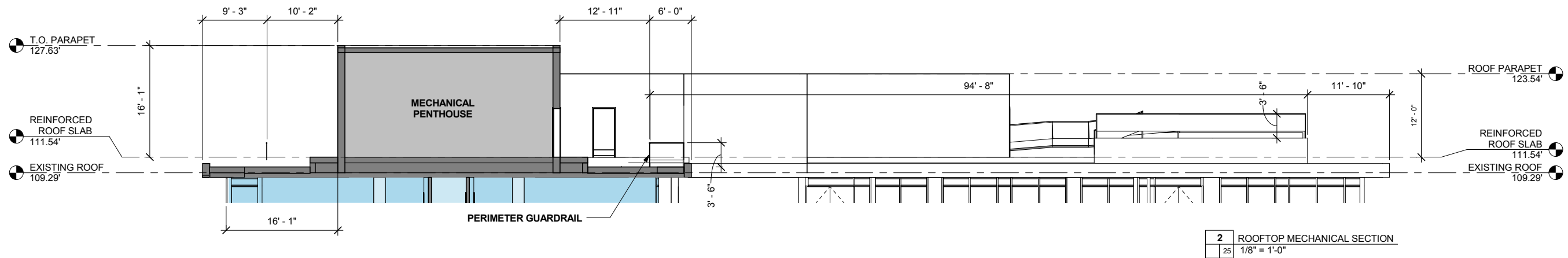
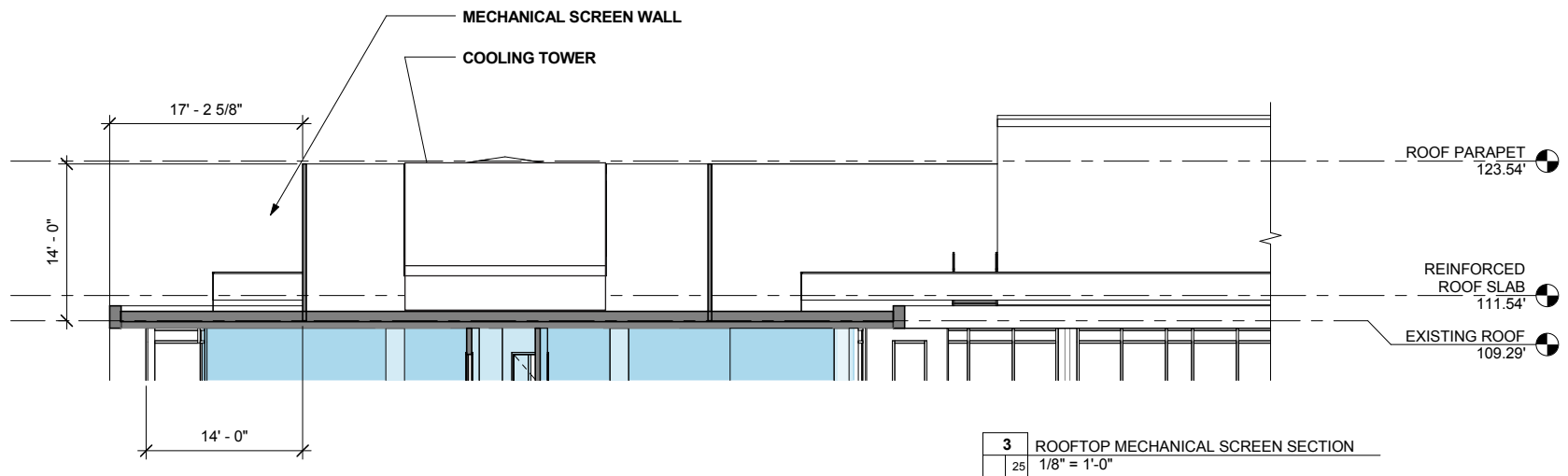
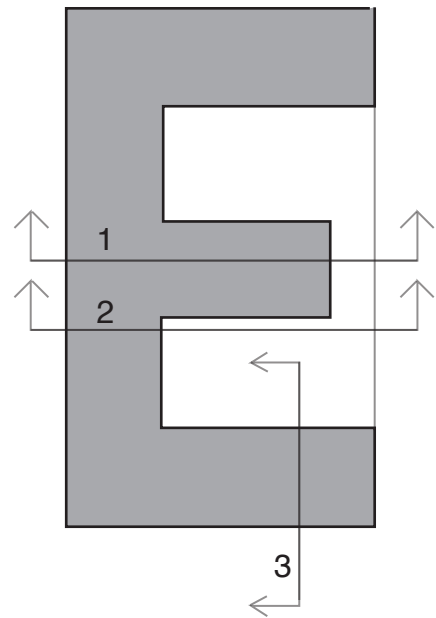
1900 HALF STREET

DC Zoning Commission Review

Square 666 Lot 15 / 1900 Half Street SW, Washington, DC · Douglas Development Corporation · Antunovich Associates © · Dewberry Consultants LLC · Lee and Associates Inc.

Building Section

March 15, 2016



1900 HALF STREET

DC Zoning Commission Review

Square 666 Lot 15 / 1900 Half Street SW, Washington, DC · Douglas Development Corporation · Antunovich Associates © · Dewberry Consultants LLC · Lee and Associates Inc.

Enlarged Rooftop Sections

March 15, 2016



1900 HALF STREET

DC Zoning Commission Review

Square 666 Lot 15 / 1900 Half Street SW, Washington, DC · Douglas Development Corporation · Antunovich Associates © · Dewberry Consultants LLC · Lee and Associates Inc.

West (Water Street) Elevation

March 15, 2016



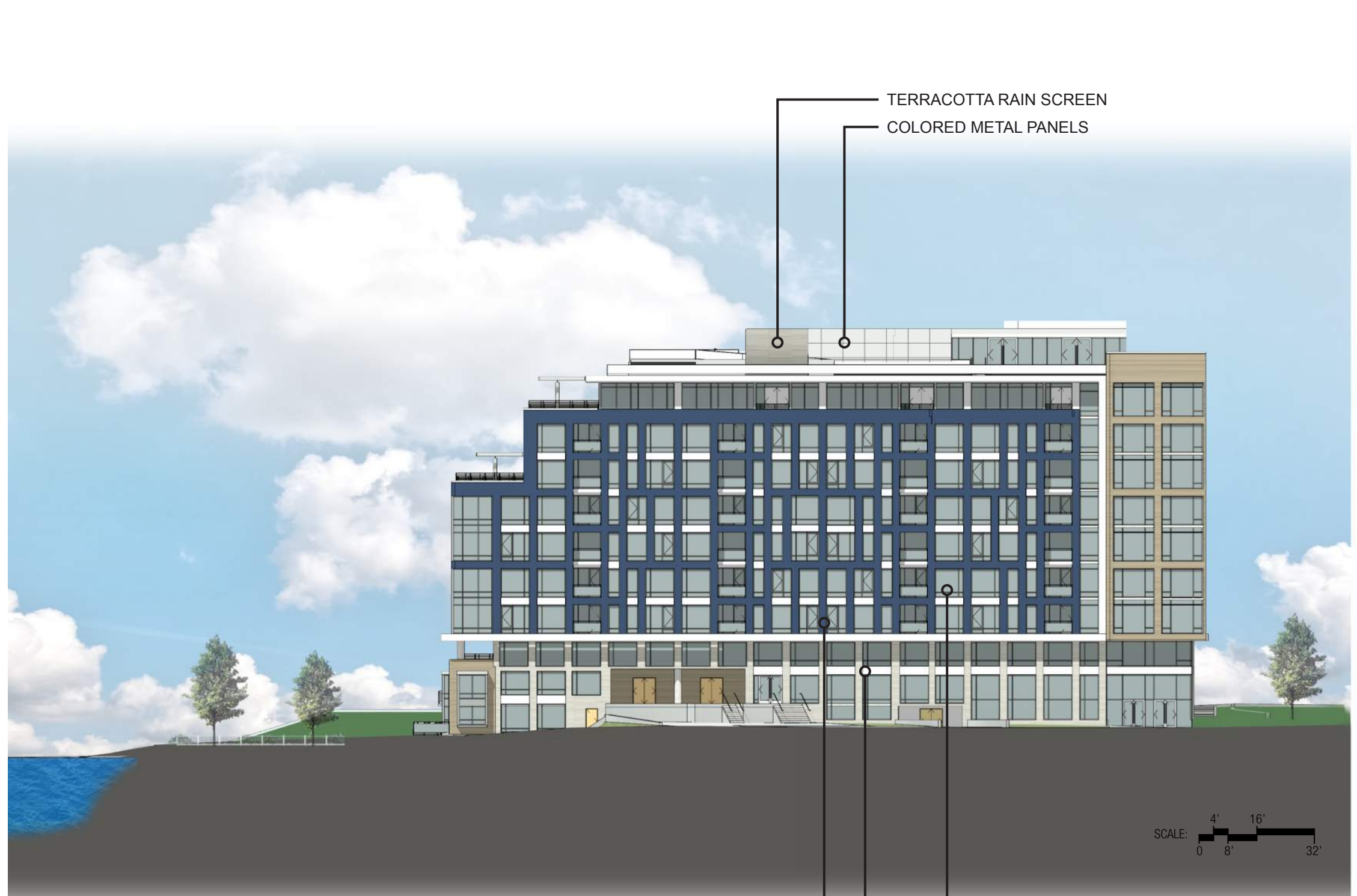
METAL PANEL FACADE PRECEDENT



METAL PANEL FACADE PRECEDENT



CURTAIN WALL PRECEDENT



TERRACOTTA RAIN SCREEN
 COLORED METAL PANELS

CURTAIN WALL - VISION GLASS
 TERRACOTTA RAIN SCREEN
 COLORED METAL PANELS

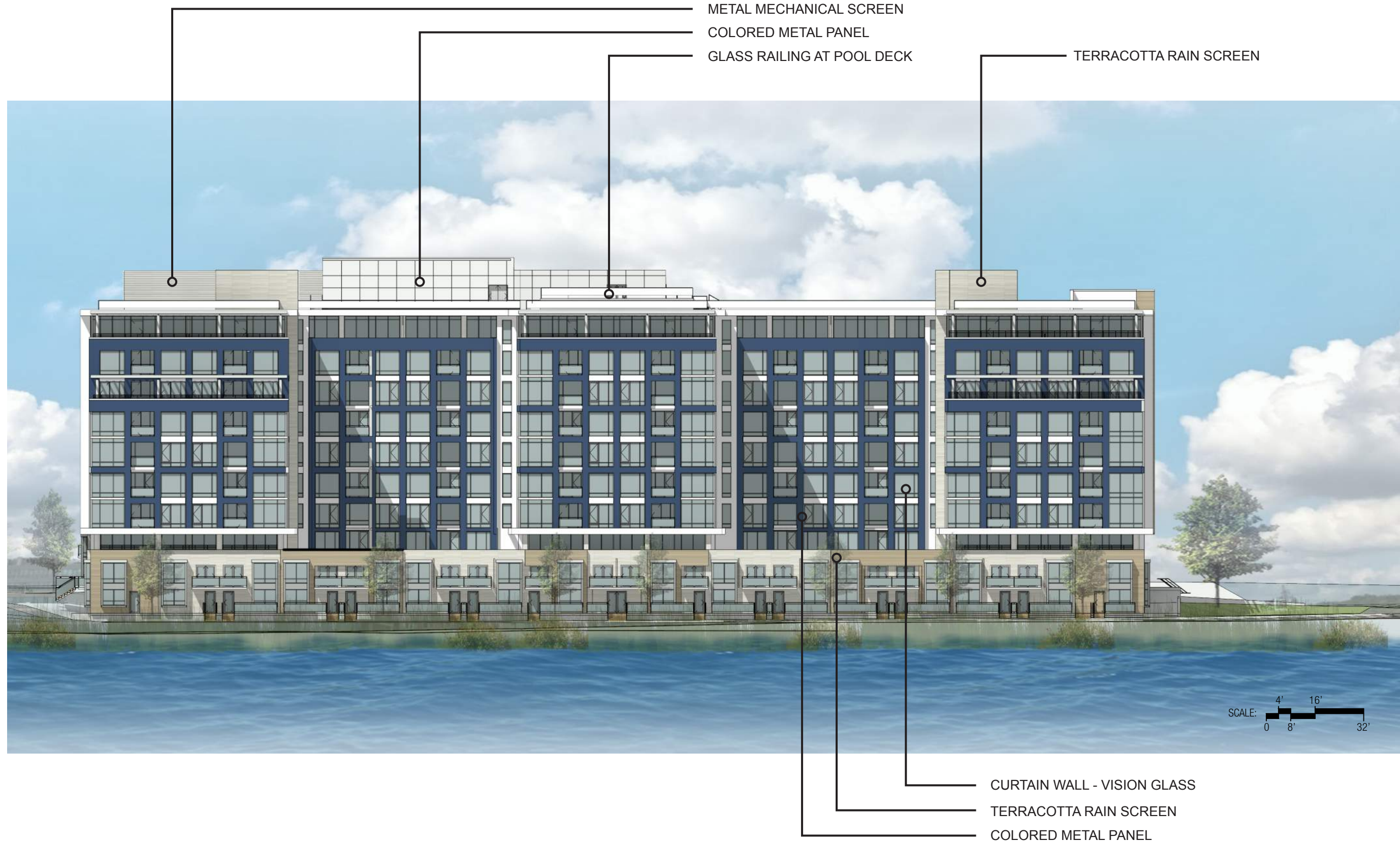
1900 HALF STREET

DC Zoning Commission Review

Square 666 Lot 15 / 1900 Half Street SW, Washington, DC · Douglas Development Corporation · Antunovich Associates © · Dewberry Consultants LLC · Lee and Associates Inc.

North Elevation

March 15, 2016



1900 HALF STREET

DC Zoning Commission Review

Square 666 Lot 15 / 1900 Half Street SW, Washington, DC · Douglas Development Corporation · Antunovich Associates © · Dewberry Consultants LLC · Lee and Associates Inc.

East Elevation

March 15, 2016



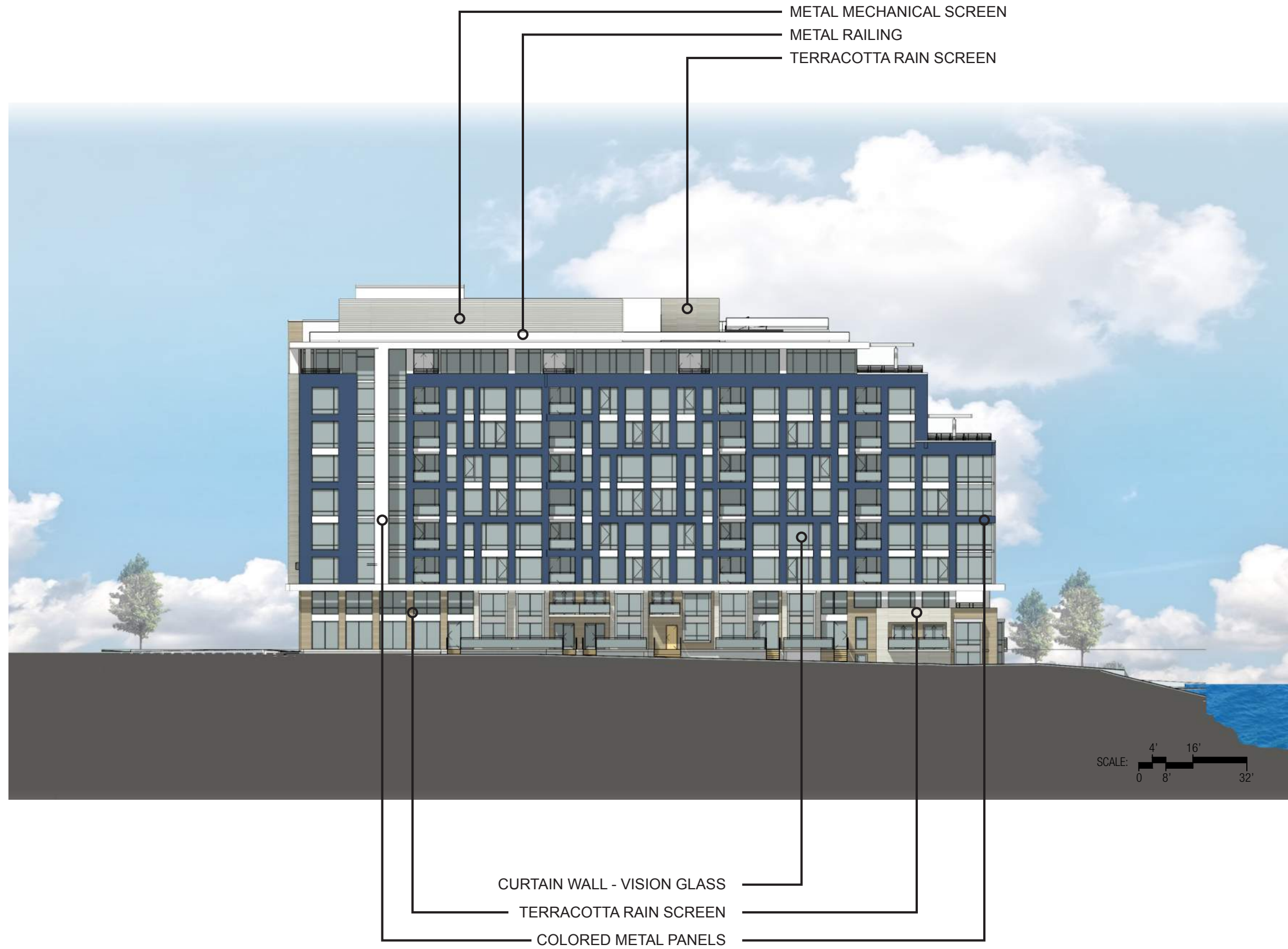
TERRA COTTA RAIN SCREEN PRECEDENT



TERRA COTTA RAIN SCREEN PRECEDENT



TERRA COTTA RAIN SCREEN PRECEDENT



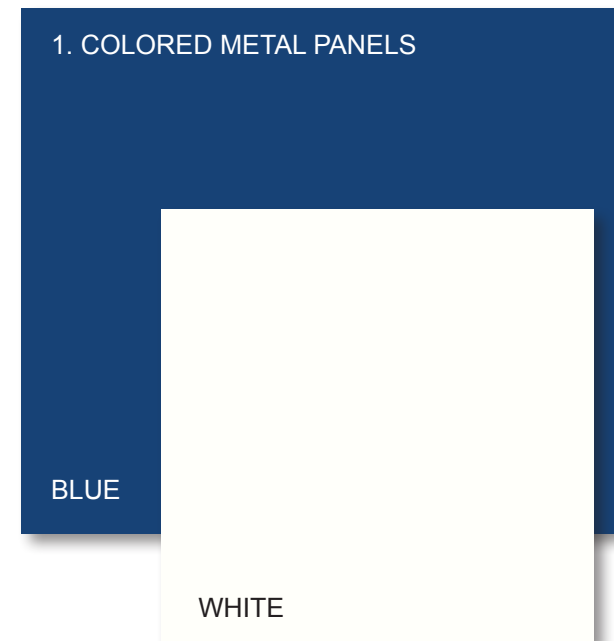
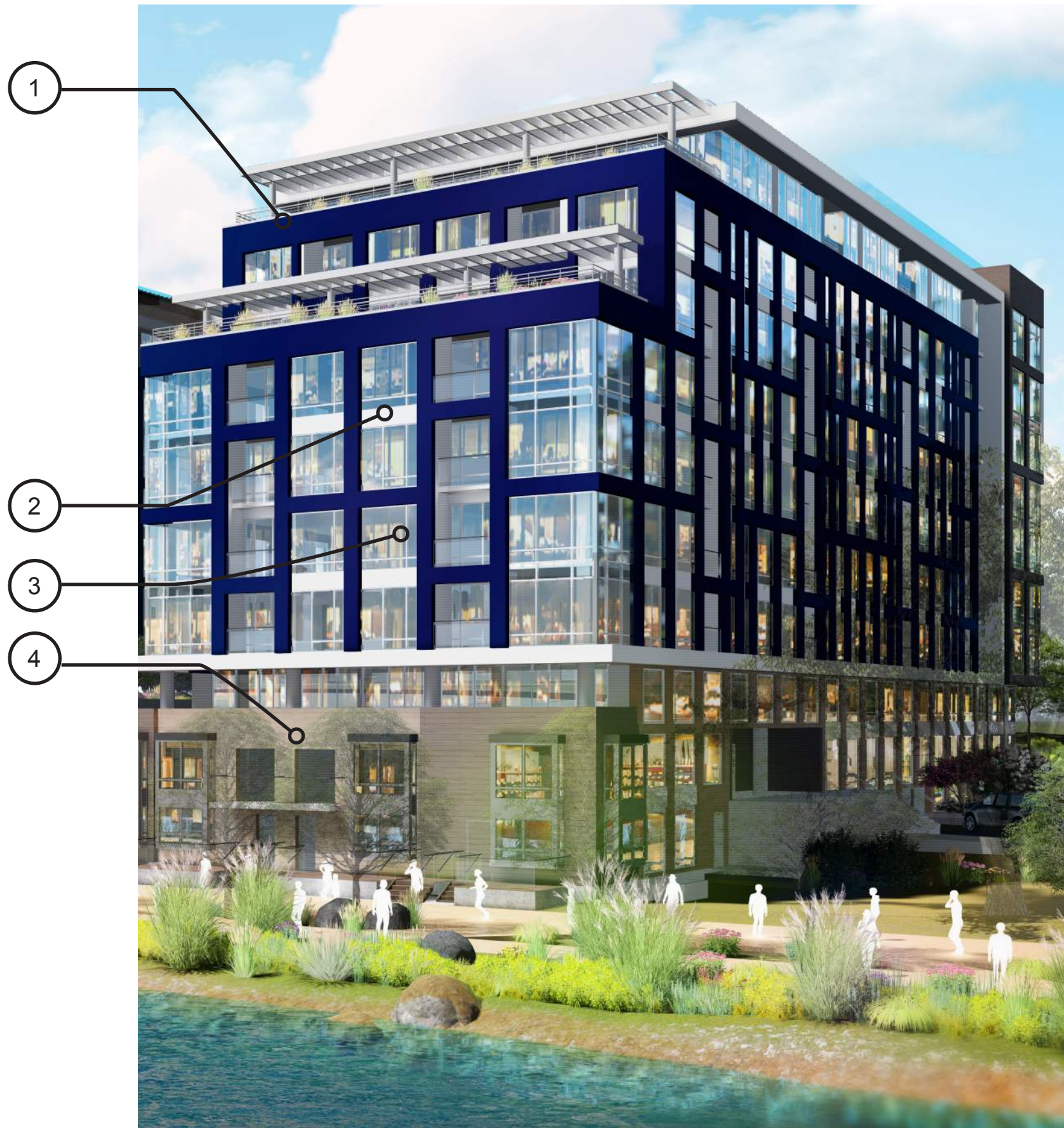
1900 HALF STREET

DC Zoning Commission Review

Square 666 Lot 15 / 1900 Half Street SW, Washington, DC · Douglas Development Corporation · Antunovich Associates © · Dewberry Consultants LLC · Lee and Associates Inc.

South Elevation

March 15, 2016



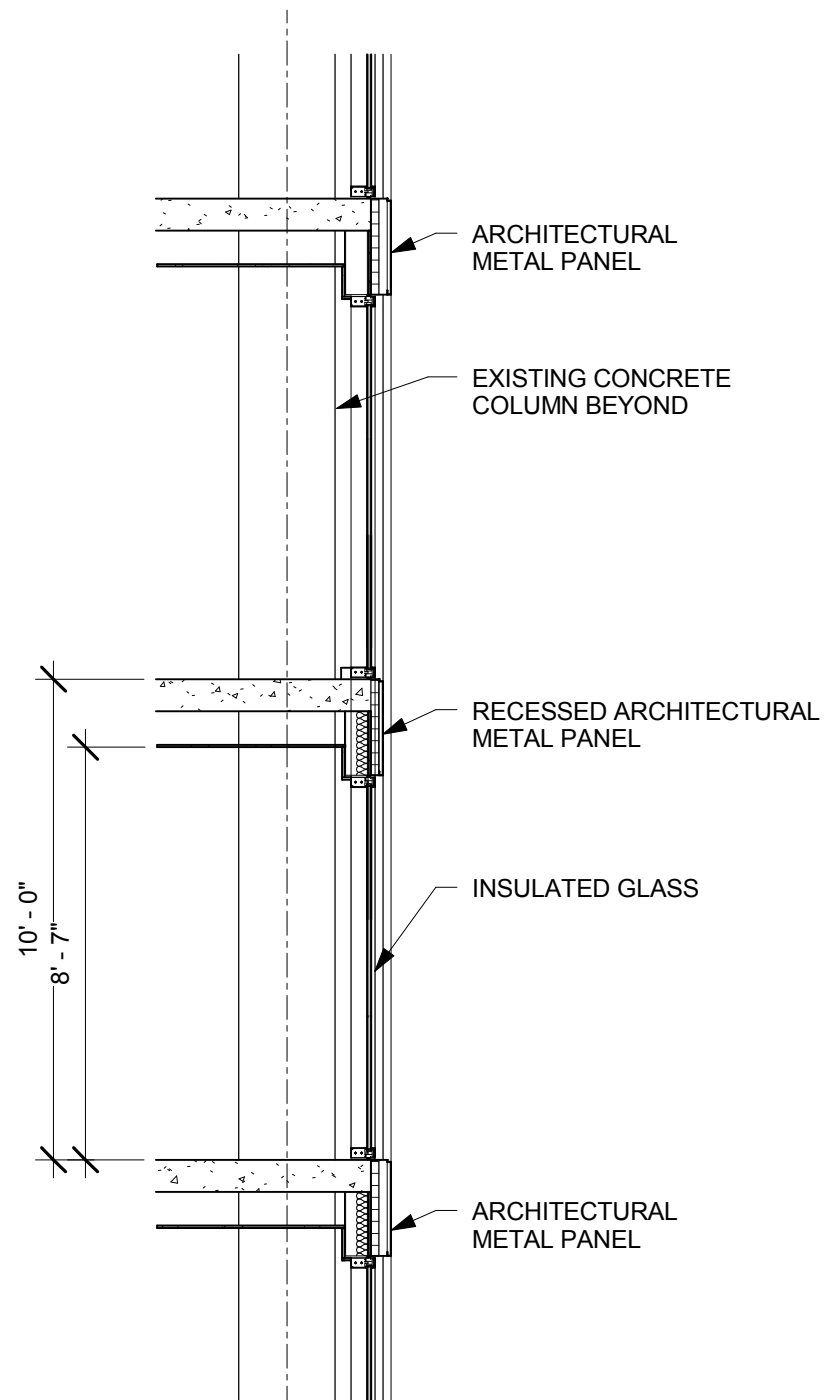
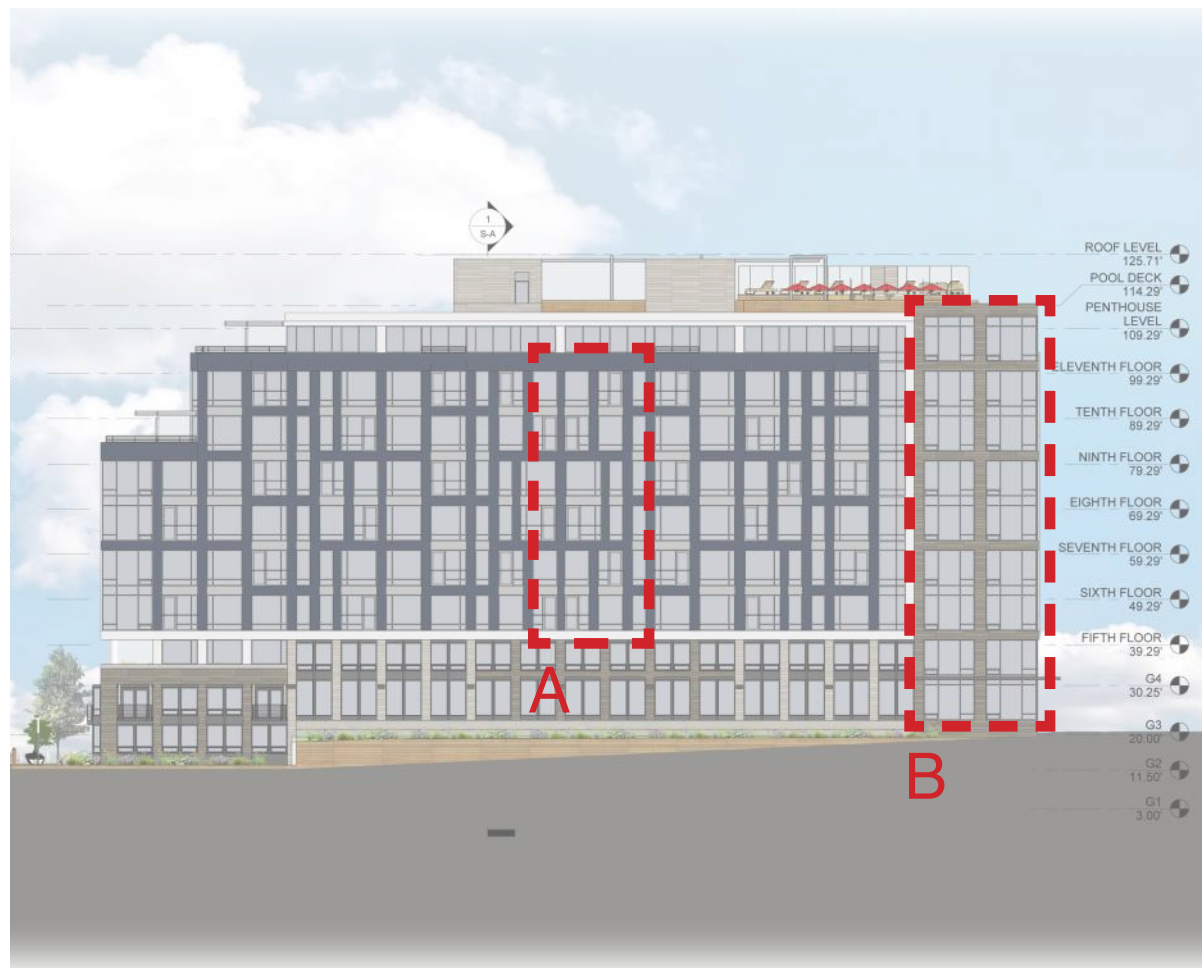
1900 HALF STREET

DC Zoning Commission Review

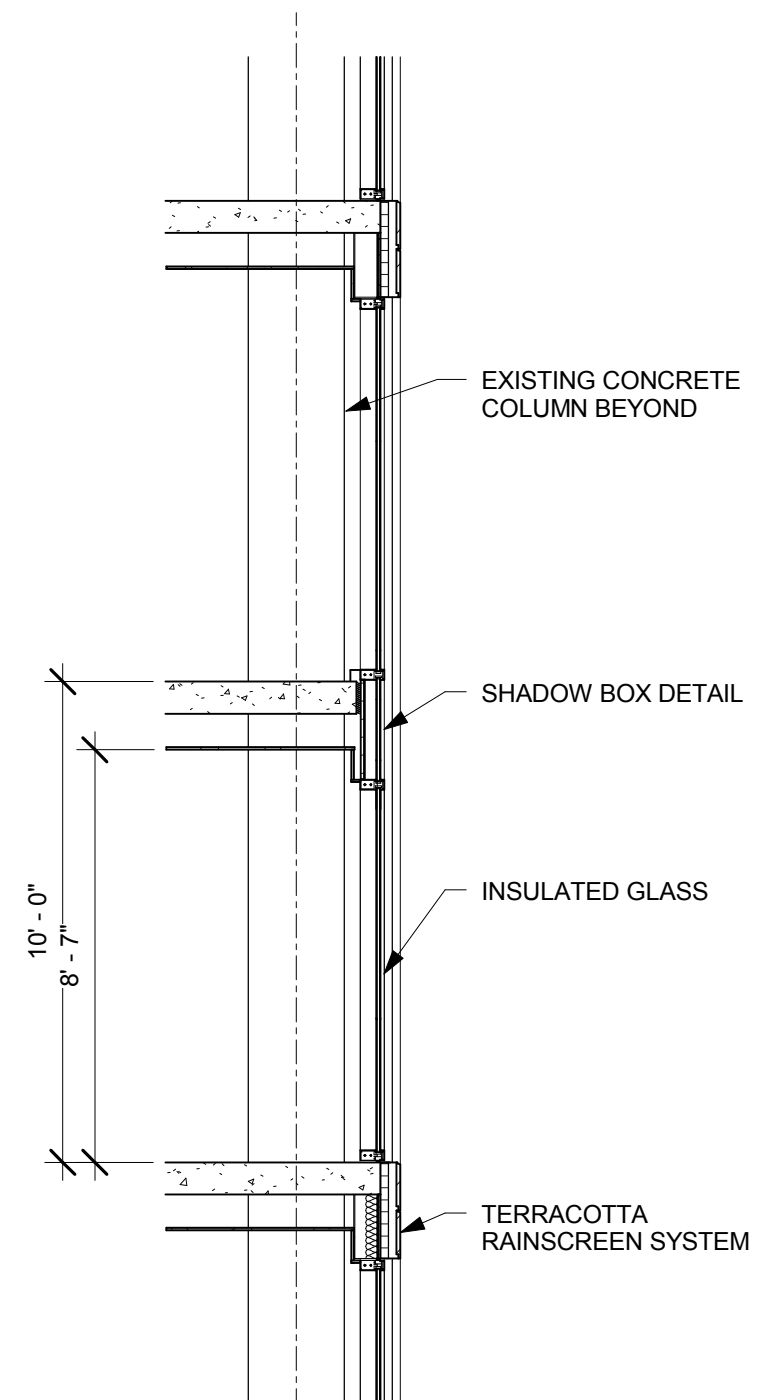
Square 666 Lot 15 / 1900 Half Street SW, Washington, DC · Douglas Development Corporation · Antunovich Associates © · Dewberry Consultants LLC · Lee and Associates Inc.

Proposed Materials

March 15, 2016



WALL SECTION A:
THROUGH METAL PANEL FACADE



WALL SECTION B:
THROUGH TERRACOTTA FACADE

1900 HALF STREET

DC Zoning Commission Review

Square 666 Lot 15 / 1900 Half Street SW, Washington, DC · Douglas Development Corporation · Antunovich Associates © · Dewberry Consultants LLC · Lee and Associates Inc.

Wall Sections

March 15, 2016



1900 HALF STREET

DC Zoning Commission Review

Square 666 Lot 15 / 1900 Half Street SW, Washington, DC · Douglas Development Corporation · Antunovich Associates © · Dewberry Consultants LLC · Lee and Associates Inc.

Overall View

March 15, 2016



1900 HALF STREET

DC Zoning Commission Review

Square 666 Lot 15 / 1900 Half Street SW, Washington, DC · Douglas Development Corporation · Antunovich Associates © · Dewberry Consultants LLC · Lee and Associates Inc.

View from the Anacostia River

March 15, 2016



1900 HALF STREET

DC Zoning Commission Review

Square 666 Lot 15 / 1900 Half Street SW, Washington, DC · Douglas Development Corporation · Antunovich Associates © · Dewberry Consultants LLC · Lee and Associates Inc.

View from Half Street

March 15, 2016